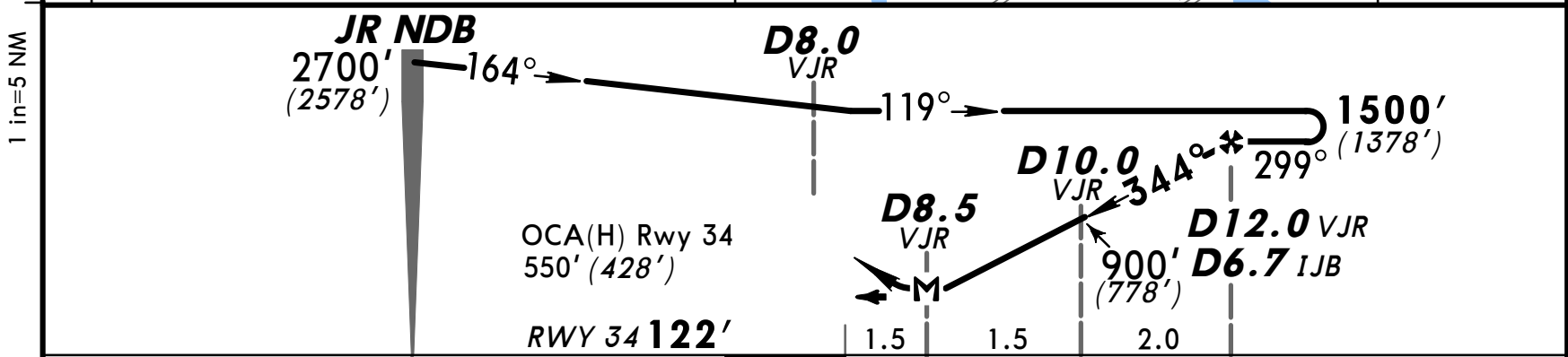
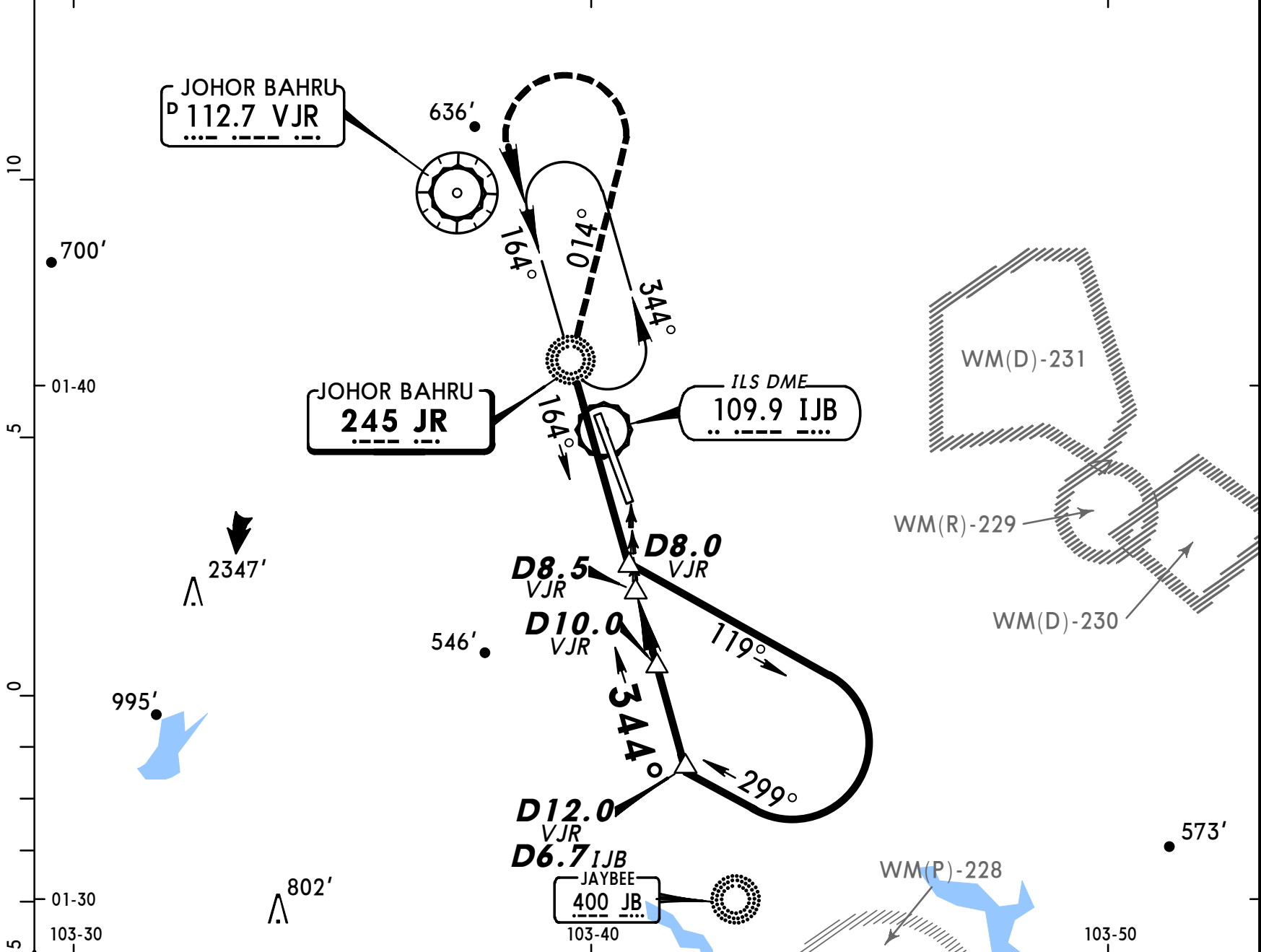


WMKJ
SULTAN ISMAIL

22 DEC 00 **(16-4)**

JEPPESEN JOHOR BAHRU, MALAYSIA
NDB DME Rwy 34

*ATIS 126.6		*JOHOR Approach 124.7		*JOHOR Tower 122.5		*Ground 121.8	
NDB JR 245	Final Apch Crs 344°	Minimum Alt D12.0 1500' (1378')	MDA(H) 550' (428')	Apt Elev 135' RWY 34 122'		<p>MSA JR NDB</p>	
MISSED APCH: Climb on 344°, cross JR NDB at 1200' or above, and track on 014° to rejoin holding pattern or as directed by ATC.							
Alt Set: hPa Rwy Elev: 4 hPa Trans level: FL 130 Trans alt: 11000' (10878') 1. Procedure based on 185 kts IAS.							



Gnd speed-Kts	70	90	100	120	140	160	PAPI HIALS 	1200' ↑ on 344° JR 245
Descent Gradient 4.8%	340	438	486	584	681	778		
MAP at D8.5								

STRAIGHT-IN LANDING RWY34			CIRCLE-TO-LAND		
MDA(H) 550' (428')					
ALS out			Max Kts		
A		1600m	100	670' (535') - 1900m	
B	1200m		135	670' (535') - 2800m	
C		2000m	180	1050' (915') - 3700m	
D	2000m	2400m	205	1050' (915') - 4600m	